



Luxurious European

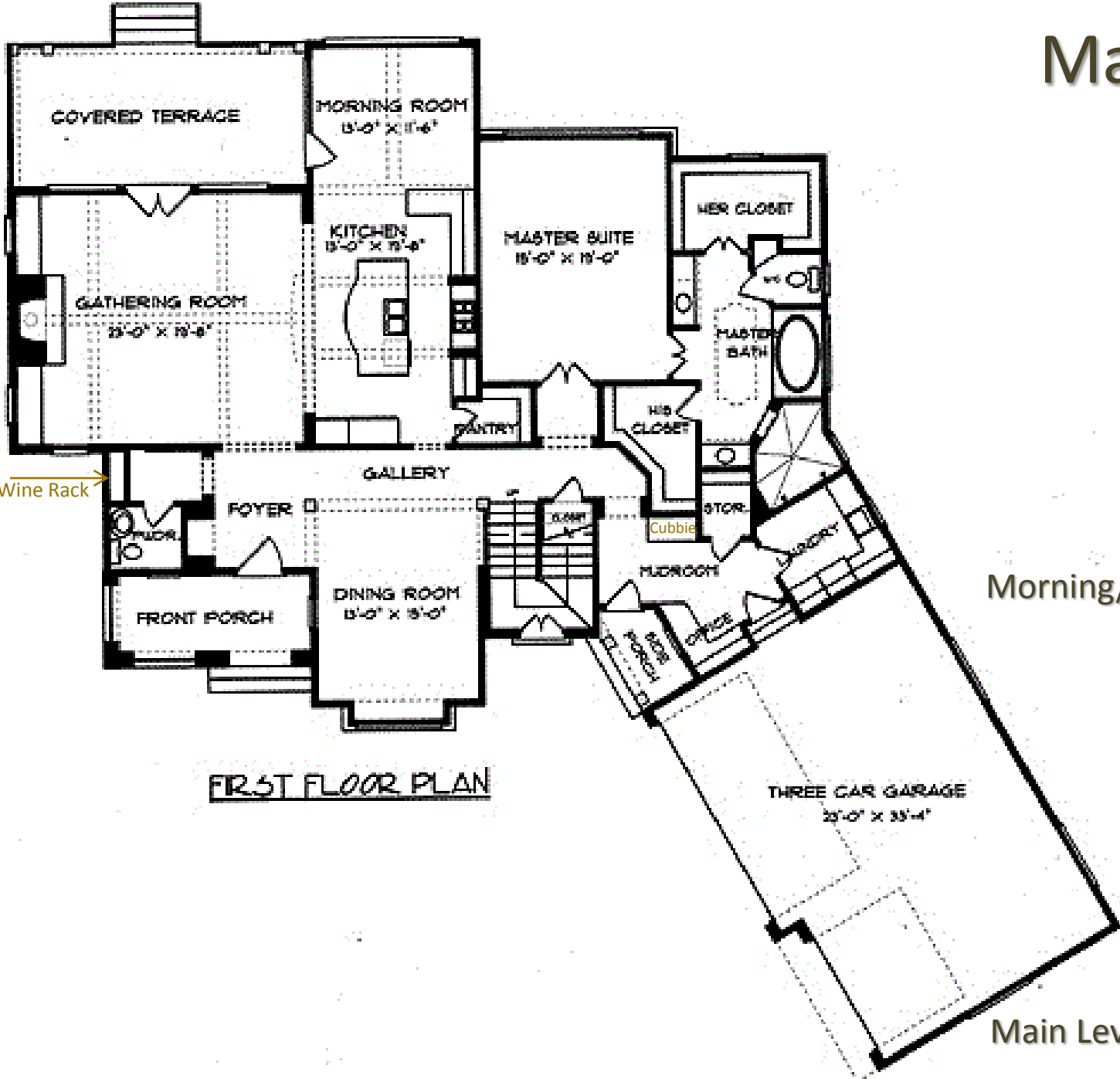


Located on 3 Acres in Amesley Manor
Jonesboro's *First and Only* Gated Community

scroll
down



Main Level

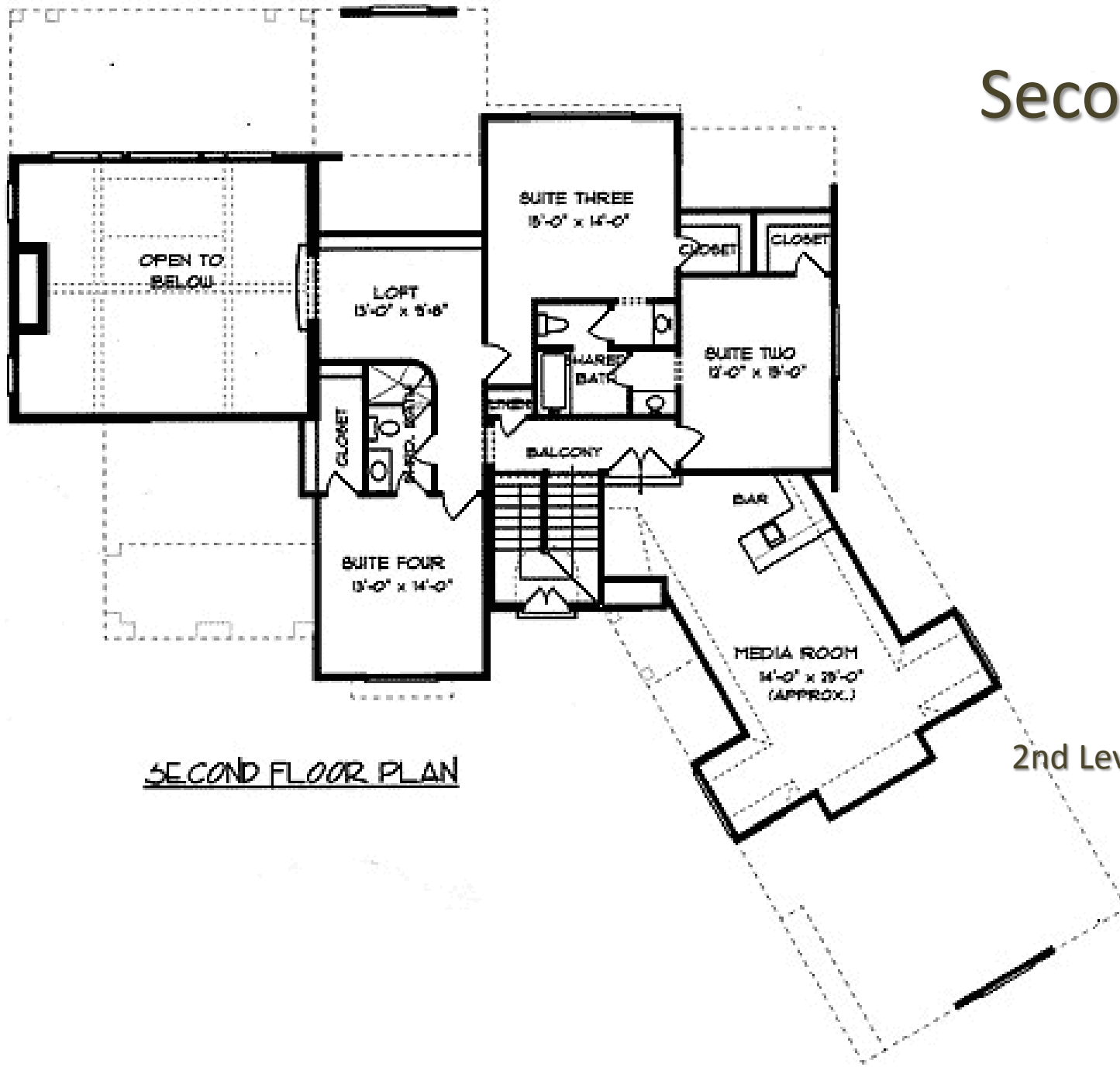


FIRST FLOOR PLAN

- Front Porch
- Foyer
- Dining Room
- Gallery
- Powder Bath
- Wine Room
- Stair Case
- Great Room
- Island Kitchen
- Walk-in Pantry
- Morning/Breakfast Room
- Master Suite
- Office Nook
- Laundry Room
- Mud Room
- Storage Closet
- Outdoor Living
- Side Porch
- 3 Car Garage

Main Level Sq. Ft. - 2,496

Second Level



- Balcony
- Bedroom Suite 2
- Bedroom Suite 3
- Jack n Jill Bath
- Bedroom Suite 4
- Full Bath
- Loft
- Media Room
- Wet Bar
- Computer Nook
- Attic Storage

SECOND FLOOR PLAN

2nd Level Sq. Ft. – 1,658

Exterior Features



- European Design
- Antique Brick and Stone Exterior
- Wood Treatments -Windows & Garage
- Double Arch Entry Front Porch
- Stained Shutters
- Covered Back Porch
- Outdoor Grill with Brick Surround
- Beautiful Exterior Light Fixtures
- Wood Carriage Garage Doors
- Brick & Stone Entry at Driveway
- Brick Mailbox
- Extensive Landscaping
- Sprinkler System
- Sodded Lawn
- Stunning Curb Appeal
- Cul-de-sac 3 Acre Lot



Interior Features

Iron Entry Door

Spacious & Open Floor Plan

Scored Acid Stained Floors on Main Level

Brick Interior Walls & Accents Throughout

Archways Throughout

Custom Distressed Cabinets & Built-ins

Granite Countertops Throughout

Staircase with Iron Stair Railing, Wood Treads &

Pebble Stone Risers

Formal Dining w/ Thin Brick Window Treatment

Built-in Cedar Wine Rack

Great Room with Two Story Fireplace, Built-ins,

& Wood Beamed Ceiling

Gourmet Kitchen Features Beautiful Custom

Cabinetry, Upgraded Stainless Steel Appliances,

Double Ovens, Warming Drawer, Oversized

Refrigerator, Pot Filler & More

Luxurious Master Suite Boasts Jet Tub, Large

Walk-in Shower with Dual Shower Heads,

Granite Counters & Copper Sinks

(continued)



Interior Features

(continued)

Mud Room with Distressed Cubbies
Office Area with Built-in Desk
Laundry Room with Distressed Cabinets,
Copper Sink & Chalkboard Accent Wall

Second Level Features

Balcony with Wood Plank Ceiling
Three Spacious Bedroom Suites with Walk-in
Closets
Two Full Baths with Granite Countertops &
Copper Sinks
Loft With Iron Rail Balcony Overlooking Great
Room Below
Media Room With Theater Equipment and Wet
Bar That Includes Granite Counter, Copper Sink
& Beverage Cooler
Built-in Linen Storage
Plenty of Attic Storage

A Sneak Peak



Cabinet Finish Sample



Wood Carriage Garage Doors



Pebble Stone Risers

Media Room



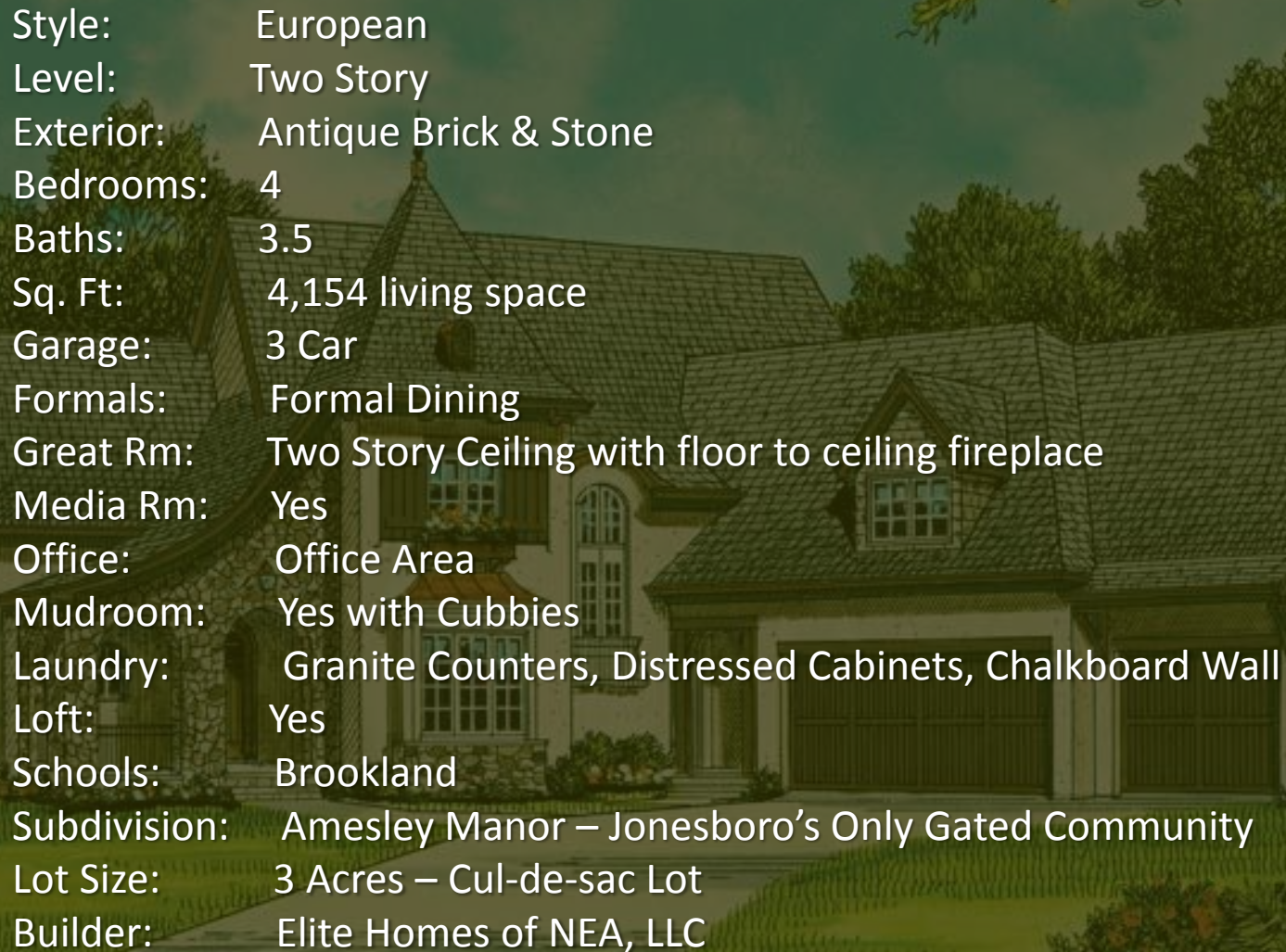
Sample of Built-in Desk & Cubbies



Sample Cubbies in Mudroom



Overview of the Home



Style:	European
Level:	Two Story
Exterior:	Antique Brick & Stone
Bedrooms:	4
Baths:	3.5
Sq. Ft:	4,154 living space
Garage:	3 Car
Formals:	Formal Dining
Great Rm:	Two Story Ceiling with floor to ceiling fireplace
Media Rm:	Yes
Office:	Office Area
Mudroom:	Yes with Cubbies
Laundry:	Granite Counters, Distressed Cabinets, Chalkboard Wall
Loft:	Yes
Schools:	Brookland
Subdivision:	Amesley Manor – Jonesboro’s Only Gated Community
Lot Size:	3 Acres – Cul-de-sac Lot
Builder:	Elite Homes of NEA, LLC



13 Three Acre Lots on 43 Acres

14 ft High Iron Entry Gates

Tree Lined Streets with Willow Oak Trees Every 50 Feet

Governed by Property Owners Association To Upkeep All Amenities

Restrictive Bill of Assurance To Protect Your Investment

Video Security System at Guard Shack

Multiple Secure Entry Options with Intercom Capabilities From Home To Gate Key Pad

Craighead Electric, CWL Water, Fusion Media Cable & High Speed Internet

Because location is one of the most important factors that directs anyone to build a new home, Amesley Manor wins hands down. North Jonesboro is booming. Amesley Manor is just minutes from Sage Meadows Country Club & Golf Course, ASU, business centers, recreation areas, restaurants, entertainment, and the new NEA Baptist Hospital. Adding to this list Amesley Manor is situated in the much desired Brookland School District. Yet with all of these amenities there is still a sense of seclusion and distinction that is part of the Amesley Manor experience....



REAR ELEVATION



Contact

Sheila Conkling

(870)-219-0652

sheila@NEAhomes.com

NEAhomes.com



Doty Real Estate

